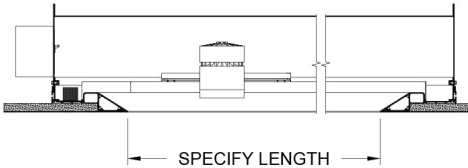
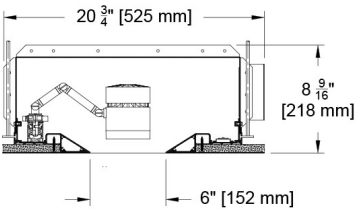
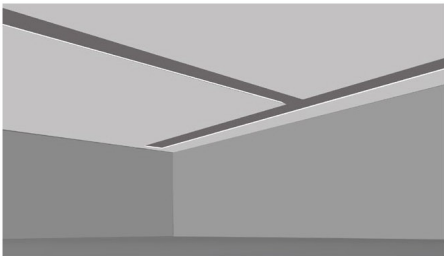
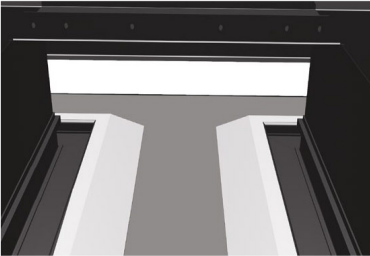


The Mosaic Family

Welcome to the Mosaic Family of linear configurable concealed track pockets and accent lights. The knife edge aperture integrates within the architectural environment as a clean, minimal incision into the ceiling. The pocket contains many useful lighting tools in the form of Mosaic Family accent lights and wall washers that can be mounted anywhere along the pocket's length, powered by concealed track or remote power supplies. Continuous indirect cove lighting can also be integrated and concealed behind the slot's shallow knife edge. The housing has variety of 90 degree corner and intersecting components for a wide range of configurable layouts. You have found the Mosaic 6" Pocket and we hope that you enjoy the details.

Mosaic 6" (T-Run)



PROJECT:

TYPE:

SPECIFIER:

DATE:

Key Points (MSC-P6)

Housing

- Extruded aluminum flangeless knife-edge housing for use in GWB ceilings with fabricated aluminum cavity to contain a variety of lighting options.
- Can be custom configured in terms of lengths and layouts. Our standard offering includes right angle corners, right angle t's and and right angle x intersections.
- Can be finished in any of our painted finishes + custom RAL. Note that Accent Heads are available in White or Black only.
- Integration of speakers, sprinklers, security cameras and HVAC diffusers (supplied by others) is possible. Consult factory.

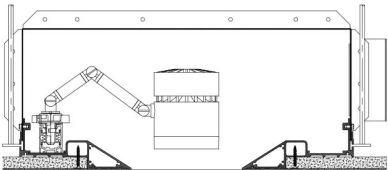
Mosaic Knife Edge Concealed Lighting

- For T1 and T2 configurations track is furnished on one or two sides of knife edge housing.
- For MH1 and MH2 configurations power supplies are furnished on one or two sides of knife edge housing.
- For TCV configurations track is furnished on one side of knife edge housing and linear indirect cove light on opposite side.
- For MHCV configurations magnetic heads are furnished on one side of knife edge housing and linear indirect cove light on opposite side.
- For CV1 and CV2 configurations linear indirect cove lights linear are furnished on one or two sides of knife edge housing.
- Track and linear indirect cove lights are furnished and coordinated with run length and configuration shapes.
- 120 volt track is furnished with two or three separately powered circuits and a single pair of data wires. In two circuit track, both circuits are dimmable as a single control channel.

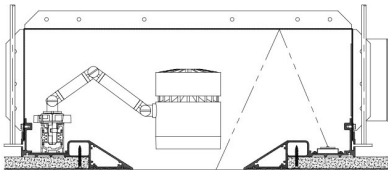
Drivers

- 0-10 volt dimming, DALI available for Track mounted and Magnetic mounted Accent Heads and linear indirect cove lighting. Refer to MSC-T, MSC-H and MSC-CV cutsheets for details.

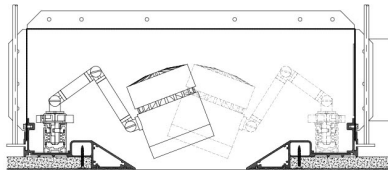
Lighting Configurations



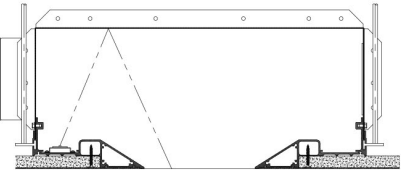
T1 - (TRACK - SINGLE)  
MH1 - (MAGNETIC HEAD - SINGLE)



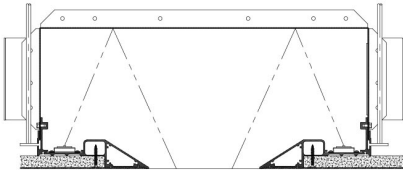
TCV - (TRACK AND INDIRECT COVE)  
MHCV - (MAGNETIC HEAD AND INDIRECT COVE)



T2 - (TRACK - DOUBLE)  
MH2 - (MAGNETIC HEAD - DOUBLE)



CV1 - (INDIRECT COVE - SINGLE)



CV2 - (INDIRECT COVE - DOUBLE)

Track, Track or Magnetic Heads and Indirect Cove Light Fixtures need to specified separately.

For Track - See Mosaic Track	▶ MSC-T
For Track and Magnetic Mount Heads - See Mosaic Heads	▶ MSC-H
For Indirect Cove - See Mosaic Indirect	▶ MSC-CV

Ordering Codes

PROJECT:













SPECIFIER:

DATE:

TYPE:

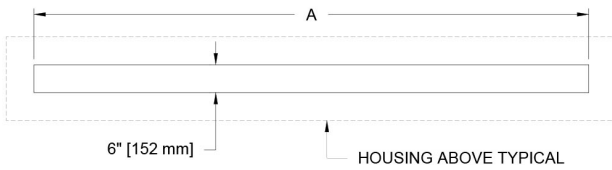
QUANTITY:

Ordering Code Example: MSC-P6-KZ-AT-T-(96x60x30)-T1-P16-P16

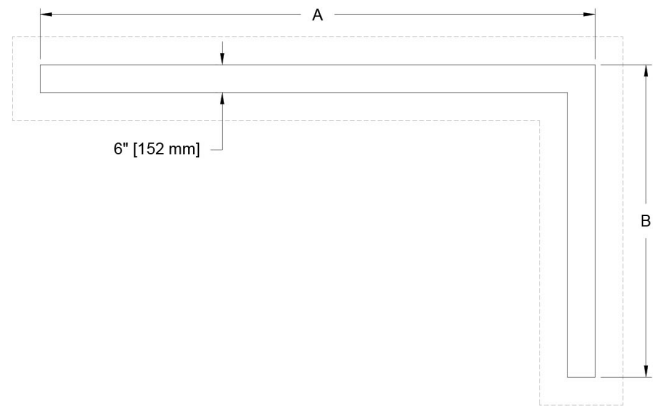
FIXTURE	TRIM	MOUNTING	LENGTH	CONFIGURATION	HOUSING FINISH	TRIM FINISH
MSC-P6						
Mosaic 6" Pocket	Flangeless Housings KZ Knife-edge Flangeless	AT   Airtight Housing	S-(A") Straight Runs  R-(A"xB") Rectangular Runs  L-(A"xB") L- Right Angle Runs  T-(A"xB"xC") T Runs  X-(A"xB"xC"xD") X-Right Angle Intersection  G-(A"xB"xC"xD") Grid Runs  <div>Note: Refer to Run Length Configurations page for standard run shapes and dimensioning conventions. Provide all key dimensions in inches. Consult factory for other run shapes and configurations.</div>	T1 Track - Single  T2 Track - Double  TCV Track and Indirect Cove  MHCV Magnetic Accent Heads and Indirect Cove  MH1 Magnetic Accent Head - Single  MH2 Magnetic Accent Head - Double  CV1 Indirect Cove - Single  CV2 Indirect Cove - Double  <div>Note: Track, Accent Heads and Indirect Cove Lighting Fixtures need to specified and ordered separately.</div> <div>Refer to:</div> MSC-T for Mosaic Track  MSC-H for Mosaic Accent Heads  MSC-CV for Mosaic Indirect Cove	W White Paint   B Black Paint   PXX Specialty Paint Color*   C Custom/RAL   	W White Paint   B Black Paint   PXX Specialty Paint Color*   C Custom/RAL Color   

# Run Length Configurations and Details

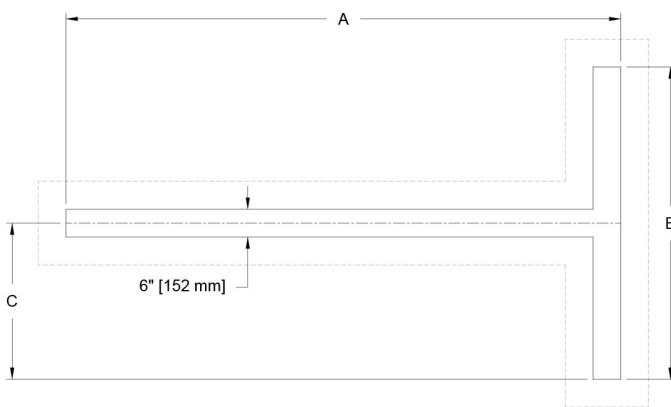
## 6"- Straight Runs (S - A")



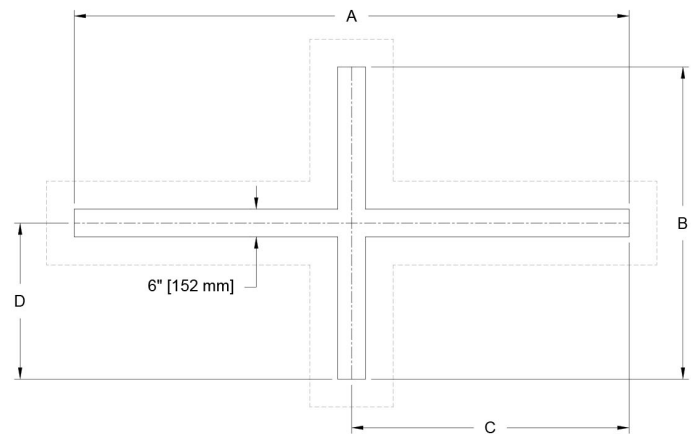
## 6"- L-Right Angle Runs (L- A" x B")



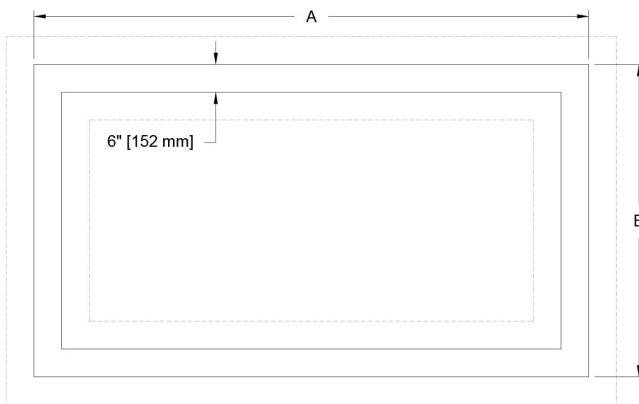
## 6"- T-Runs (T - A" x B" x C")



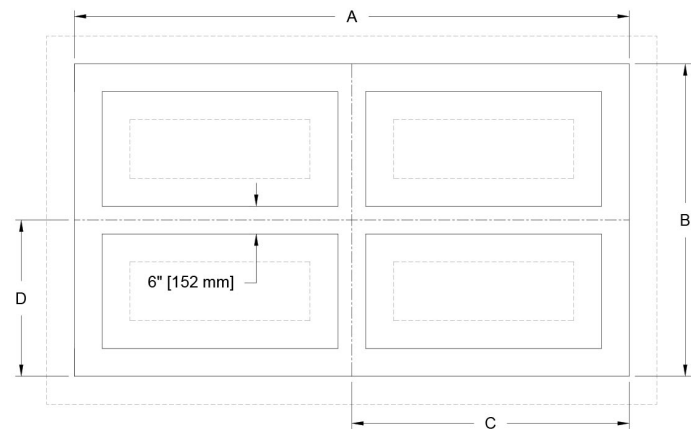
## 6"- X-Right Angle Intersect (X - A" x B" x C" x D")



## 6"- Rectangular Runs (R - A" x B")

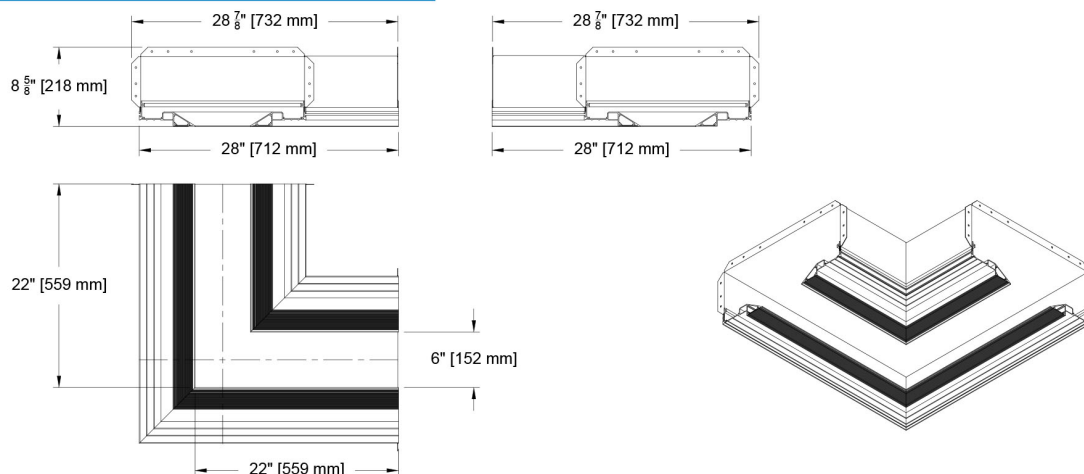


## 6"- Grid Runs (G - A" x B" x C" x D")

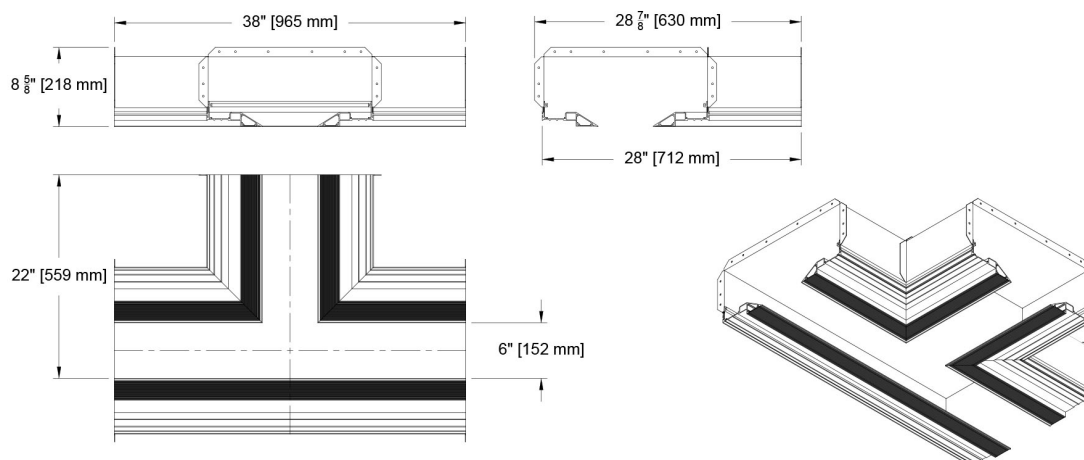


## Run Length Configurations and Details

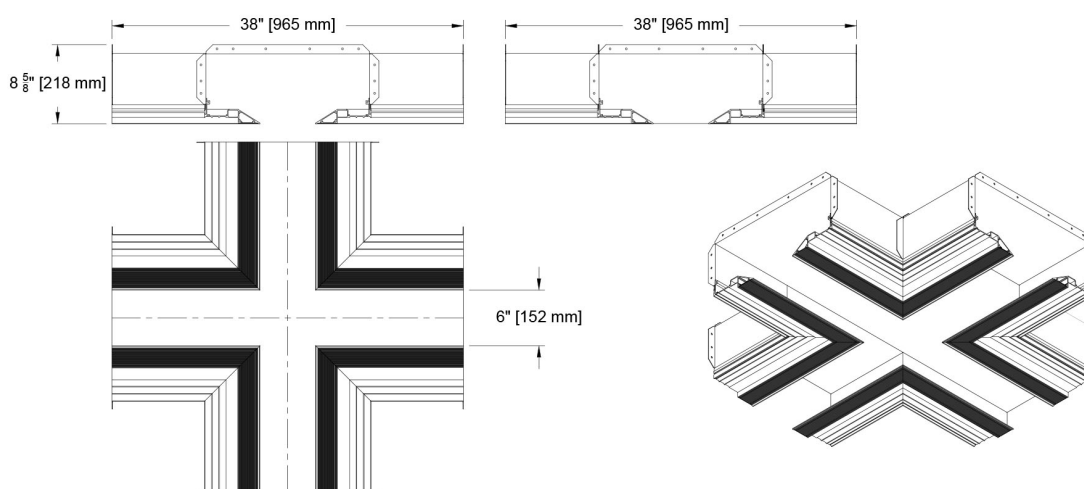
### 6"- Right Angle "L" Intersection



### 6"- Right Angle "T" Intersection

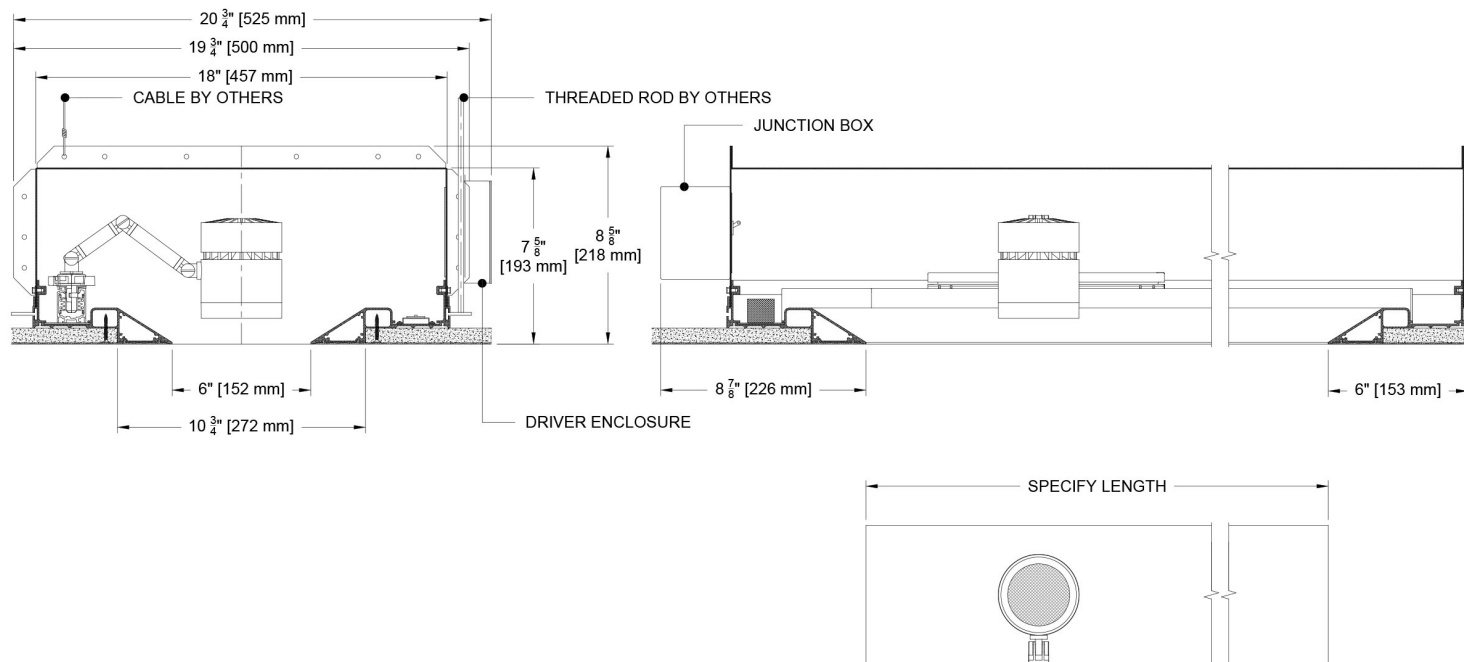


### 6"- "X" Intersection



# Ceiling Cutouts and Dimensions

## 6"- Housing with Direct and Indirect Lighting



## 6"- Housing with Indirect Lighting

